

# **COMIGNOLI IN CALCESTRUZZO**



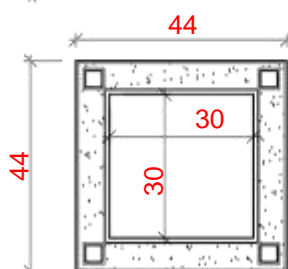
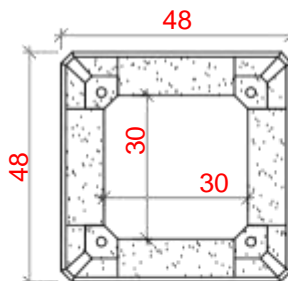
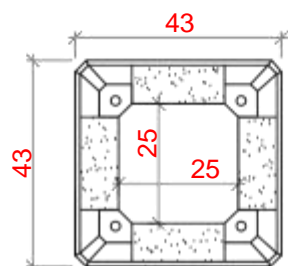
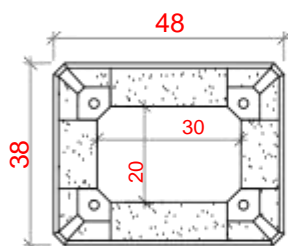
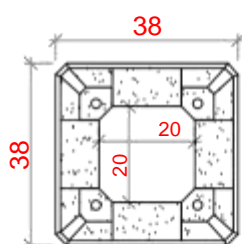


# COMIGNOLI IN CALCESTRUZZO



EDILIZIA CIVILE

Disegno



Misure Nette Interne	Codice prodotto	Elemento di PROLUNGA	Elemento TERMINALE	COMIGNOLO COMPOSTO 3 Prolunghe 1 Terminale
----------------------	-----------------	----------------------	--------------------	--

20x20	GRIGIO	Codice: COMG 20			
	ROSSO	Codice: COMC 20			

20x30	GRIGIO	Codice: COMG 30			
	ROSSO	Codice: COMC 30			

Tipo Pesante

25x25	GRIGIO	Codice: COMG 25			
	ROSSO	Codice: COMC 25			

Tipo Pesante

30x30	GRIGIO	Codice: COMG 30-			
	ROSSO	Codice: COMC 30-1			

Tipo Leggero

30x30	GRIGIO	Codice: COMG 30-1			
	ROSSO	Codice: COMC 30-1			