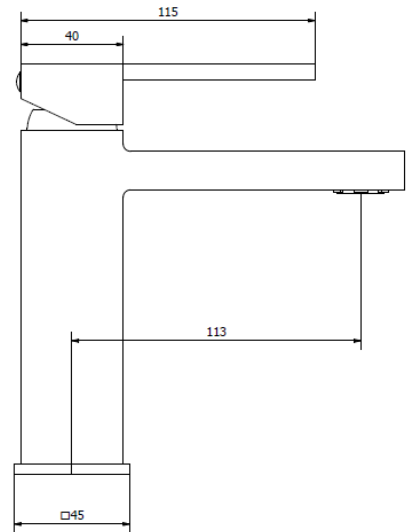
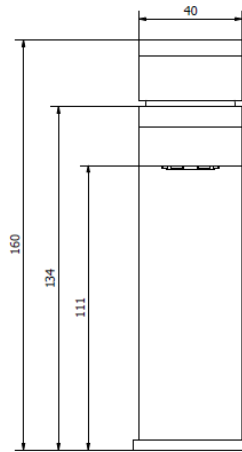




www.ibrubinetterie.it

RUBACUORI
RU200

Range
Product



Product Description

Mono hole washbasin mixer with a 1-1/4" click-clack automatic pop-up waste, a metal lever and the base integrated within the body as single-casted.

Available Finishings

Chrome	<input checked="" type="checkbox"/>	Glossy Black	<input checked="" type="checkbox"/>	PVD Gold	<input type="checkbox"/>	Copper	<input type="checkbox"/>
Brushed Nickel	<input checked="" type="checkbox"/>	Matt White	<input type="checkbox"/>	Gold	<input type="checkbox"/>	Bronze	<input type="checkbox"/>
Glossy White	<input checked="" type="checkbox"/>	Matt Black	<input type="checkbox"/>	Rose Gold	<input type="checkbox"/>	YO - Your Own	<input checked="" type="checkbox"/>

Tech Specifications

iB Standard	Possible Alternative
-------------	----------------------

Cartridge	iB 25 mms Ceramic Discs Cartridge	Flow Restrictions – See below
Wall Hoses	Flexible Inox 3/8", 450 mms long	Flexible Inox 1/2", 450 mms long Copper Tails PEX Pipes
Aerator	M 24X1	Different lengths available on request

Flow Rate
(+/- 10%)

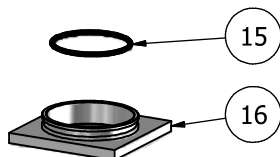
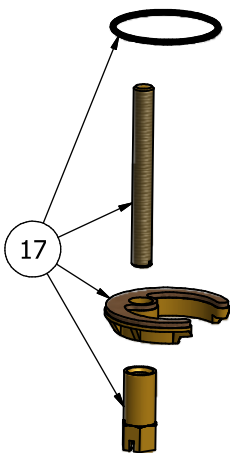
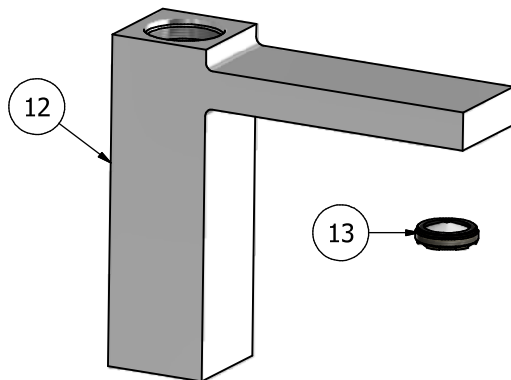
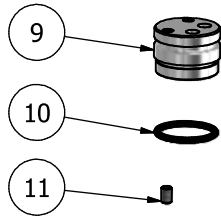
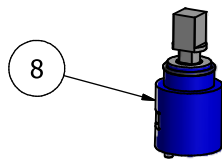
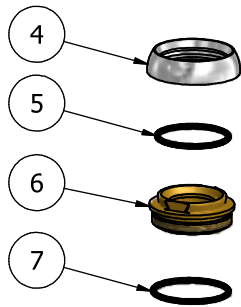
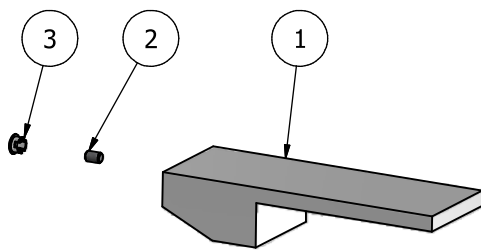
1 BAR	7 l/m
2 BAR	9.5 l/m
3 BAR	12 l/m

Changing aerator or adding flow restrictors in the hoses, the following range of TOP flow rates can be achieved	1,5 l/m
	2,0 l/m
	4,0 l/m
	6,0 l/m
	8,0 l/m
	10,5 l/m
11,5 l/m	

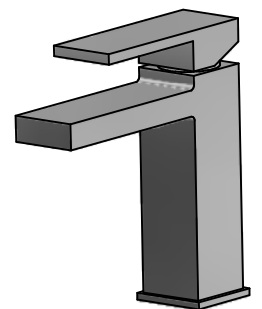
Material	Brass According to CUZN35PB2AL-B(CB752S) Max Lead content: 1,6%
Production	Main body is a single casted piece




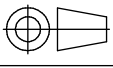
info@ibrubinetterie.it
 p.iva 01785230986
 capitale sociale €420.000,00 i.v.
 T +39 030 802101
 F +39 030 803097
 iB Rubinetterie SpA
 via dei pianotti, 3/5 - 25068 sarezzo (bs) - Italy



Elenco parti			
EL	CODICE	NUMERO DI MAGAZZINO	QT
1	AQ0013277	Zamack square handle 40x40x23.5x115	1
2	AQ0001081	Grubscrew M4x6 p.p.	1
3	AQ0006650	Plug cover Ø7	1
4	AC0012004	Cartridge fixing nut chromed cover	1
5	AQ0006586	OR 25.12x1.78 NBR 70 SH	1
6	AS0011182	Fixing nut M30x1 H17	1
7	AQ0010564	OR 26.7x1.78 NBR 70 SH	1
8	AQ0013098	Cartridge K25 OP S	1
9	AC0011859	Connection piece Ø24.9X17.5	1
10	AQ0013635	OR 20x2 NBR 70 SH	1
11	AQ0001081	Grubscrew M4x6	1
12	AQ0013800	Basin mixer 40x40 H130 L150	1
13	AQ0012140	Perlator NP slim M24x1	1
14	AQ0011013	Flex inox M8x1 G3/8" L450	2
15	AQ0008091	OR 28x1.5 NBR 70 SH	1
16	AC0011343	Basin base 45x45x8,5	1
17	AQ0010505	Fixing set	1
18	AQ0009837	Simple rapid waste 1"1/4	1



A termini di legge questo disegno non può essere riprodotto senza la nostra autorizzazione

 www.ibrubinerie.it Via del Pianotti 3/5 25068 Sarezze - BRESCIA tel. 030802101 fax. 030803097 www.ibrubinerie.it	Tolleranze generali		Peso	Scala 1:2	Formato ISO A2	
	Materiale					
	Disegnatore Vivenzi M.	Data creazione 17/11/2010	Approvato da	Approvato il		
	Denominazione Esplso lavabo Rubacuori 40x40				Codice KRU200CCXN_10	

WARRANTY

all iB Rubinetterie SpA products are warranted for 10 years from the date of purchase, for the following cases:

- defects of casting, porosity and chrome plating
- operating defects caused by incorrect fabrication.

The warranty provides for the repair or replacement of products with fabrication defects recognized by our technical office.

There is no other type of compensation and the merchandise must be returned FOB our warehouse. The warranty only cover surface defects (scartches, dings, etc.) on fittings that have not been installed and used, returned in its original packaging with all components.

O-rings, gasket seals and components subject to wear proportional to use are warranted for 2 years.

The warranty is void in the following cases:

- error installing and putting the product into service.
- deterioration of chrome-plated surfaces due to use of cleaning products containing acids or abrasive substances
- deterioration of surface with finishes other than chrome plating. Their durability is, in fact, dependent on the user's care and gentleness of use.
- deterioration of the fitting due incorrect installation.
- improper repairs and maintenance performed without the company's prior authorization.

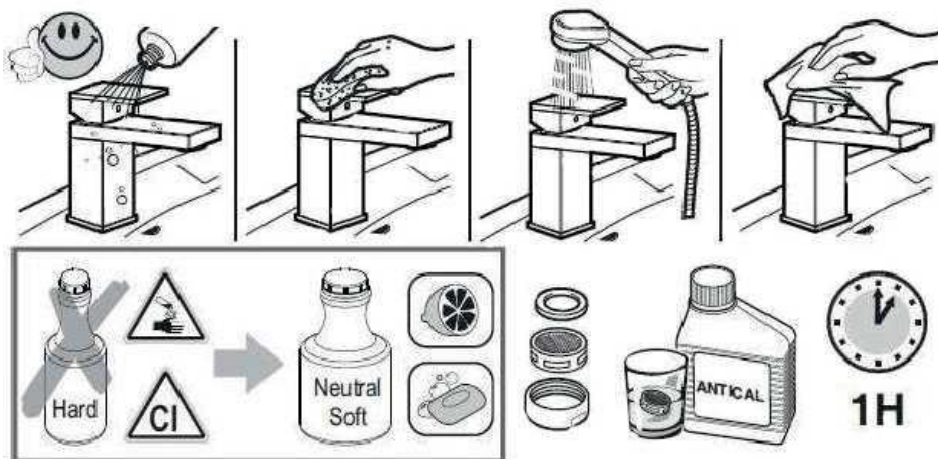
The warranty from iB Rubinetterie SpA is not renewable.

Cleaning:

We recommend cleaning chrome-plated and gold-finish surface with water and soap, using a soft cloth.

Do not use detergents that contain hydrochloric acid or abrasive substances.

Plastic parts must only be cleaned with soap and water and soft cloth.



IMPORTANT

Pressure & Temperature Requirements.

- * Hot and cold water inlet pressures should be equal.
- * Inlet pressure range: 150-1000 kPa
- * New Regulation: -500 kPa maximum operating pressure at any outlet within a building. (Ref. AS/NZS 3500.1-2003, Clause 3.3.4)
- * Maximum hot water temperature: 80°C.



iB Rubinetterie S.p.A.
Via dei Pianotti 3/5
25068 SAREZZO (BS) Italy
Iscr. Reg. Impr. BS 01785230986
R.E.A. BS 352087
P.IVA IT01785230986
Capitale Sociale € 420.000,00 i.v.
phone +39 030 802101
fax +39 030 803097
info@ibrubinetterie.it
www.ibrubinetterie.it

