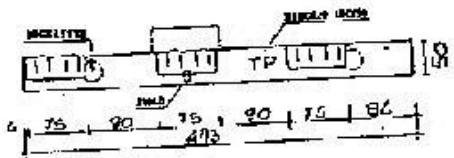
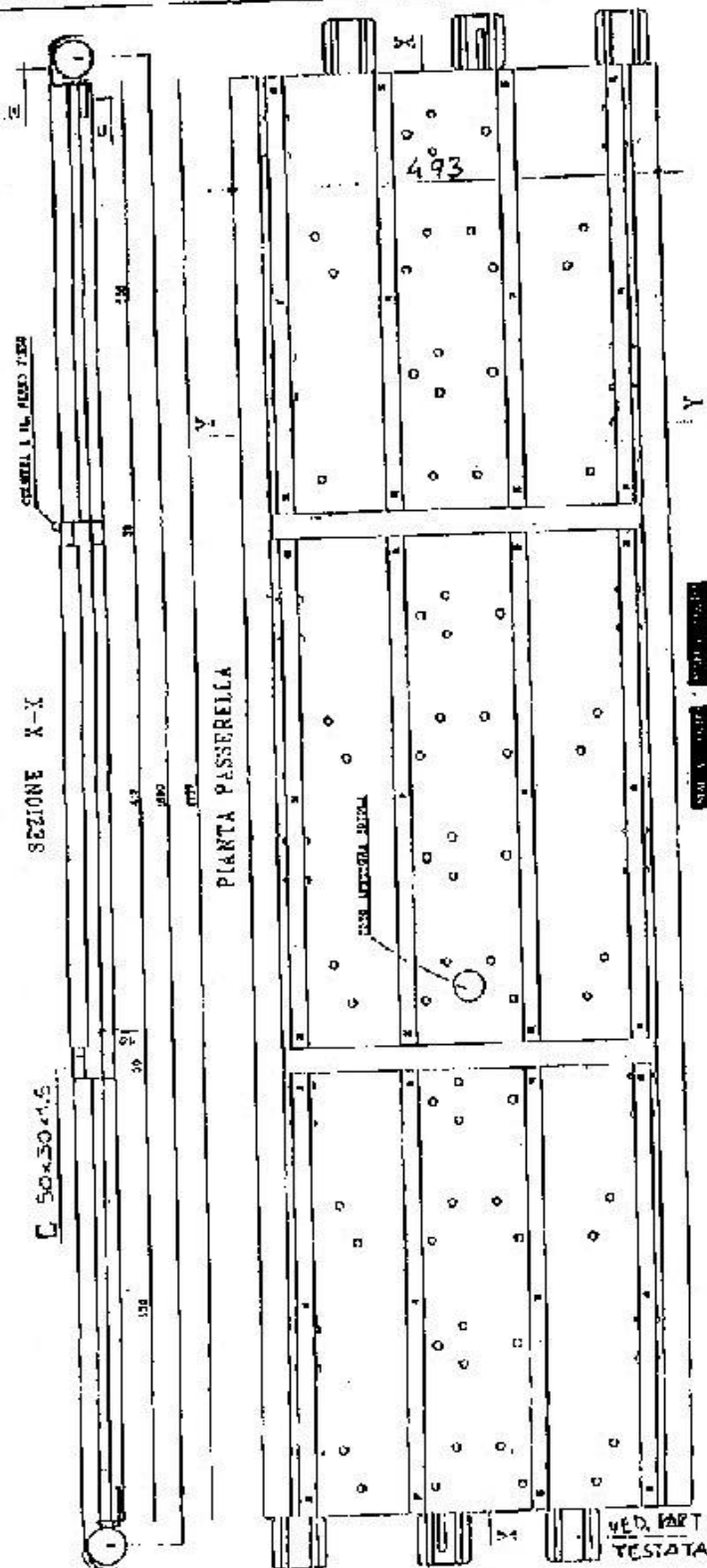


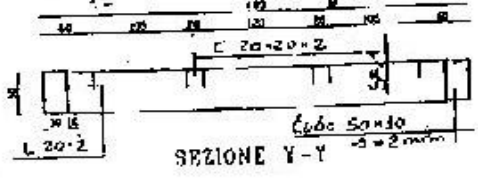
PESO = 22 daN



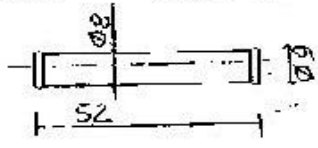
PART. TESTATA



PART. E



PART. F PIVOLE A B



- PORE DI BUCATURA N. 24 FILE DI PORE
- # 10 PASSO cm 10 (TOTALE N. 152 PORE)
- SOCCIOLOTTIO N. 12 PORE # 10 PER SOLO ACQUE
- * N. 36 PORE IN SALDATURA # 5
- SALDATURA 3x3

CONDOR S.P.A.
ZONA INDUSTRIALE
04038 CASTO (S. ANGELO IS.)
Tel. (081) 952100 - 952101 - 952102
Parma 1/A 0272169 005 5