

Elettropompe

electric pumps

XSP

Elettropompe sommergibili con trituratore per acque sporche e cariche *Sewage Submersible Pumps*

Applicazione

- Queste elettropompe con girante tritratore, possono essere utilizzate per il pompaggio e la triturazione di acque luride con corpi solidi e parti fibrose. Svuotamento di fosse di decantazione pozzi neri e pozzi di raccolta liquame. Movimentazione di acque luride ad uso domestico, industriale e agricolo.

POMPA

- Max profondità di immersione: 5m
- Max temperatura liquido: +40%
- Valore pH liquido: 4-10

MOTORE

- Avvolgimento in rame
- Protezione termica interna
- Albero in acciaio inox
- Classe di isolamento: B
- Classe di protezione: IP68

Application

- Wastewater drainage in factories, construction sites and commercial facilities.
- Drainage system in municipal sewage treatment plants.
- Drainage station in residential quarters.
- Municipal projects.
- Methane pools and field irrigation in countryside.

PUMP

- Max. immersion depth: 5 m
- Max. liquid temperature: +40°C
- Liquid pH value: 4 – 10
- Liquid kinematic viscosity: $7 \times 10^{-7} \sim 23 \times 10^{-6} \text{ m}^2/\text{s}$
- Max. liquid density: $1.2 \times 10^{-3} \text{ kg/m}^3$

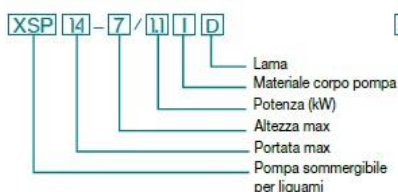
MOTOR

- Copper winding
- Built-in thermal protector
- Stainless steel welded shaft
- Insulation class: B
- Protection class: IP68

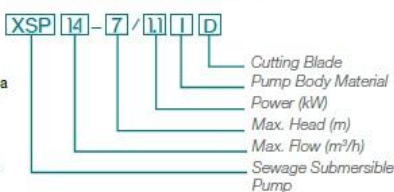
novità
new pump



Codici identificativi

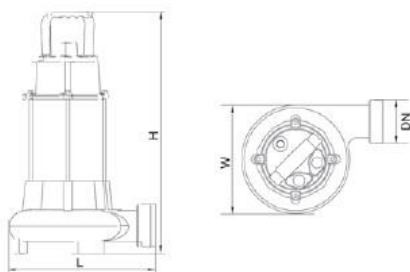


Identification Codes



Dati tecnici | Technical Data

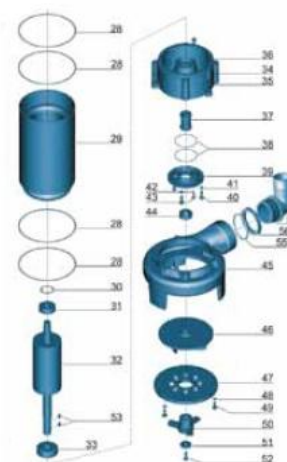
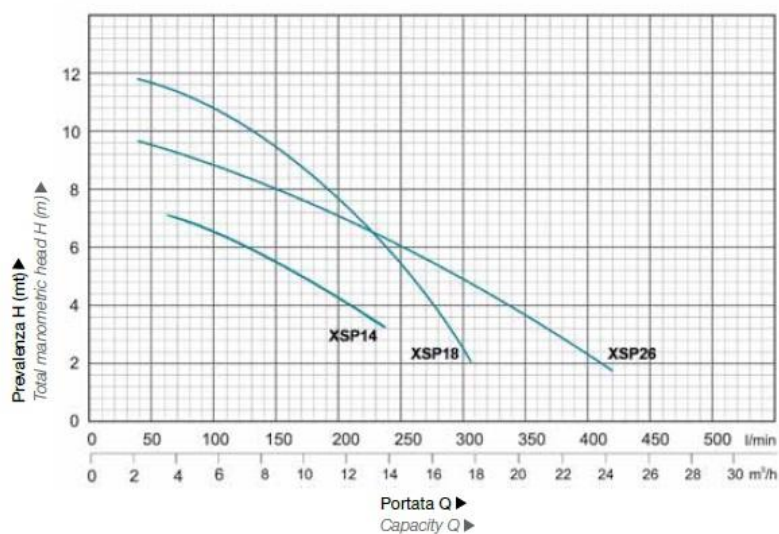
Modello Model	Potenza Power		Diametro uscita Outlet diameter	Voltaggio Voltage	Portata max. Max. flow	Prevalenza max. Max. head	Max diam particelle Max. dia. of particle	Codice Code	€ cad € each
	kW	HP							
XSP14	1.1	1.5	50 mm	380/50 (V/Hz)	233 lt	7 m	22.5 mm	10XSP14	
XSP18	1.3	1.80	50 mm	380/50 (V/Hz)	300 lt	12 m	22 mm	10XSP18/12	
XSP26	1.8	2.5	75 mm	380/50 (V/Hz)	440 lt	10 m	28.5 mm	10XSP26	



Dimensioni | Dimension

Modello Model	DN	L (mm)	W (mm)	H (mm)
XSP14	50	225	202	478
XSP18/12	50	252	191	510
XSP26	75	290	196	520

Diagramma prestazioni Hydraulic Performance Curve



Descrizione componenti | Materials Table

Pos. Pos.	Part. Part.	Pos. Pos.	Part. Part.	Pos. Pos.	Part. Part.
1	Bullone Bolt	20	O-ring O-ring	39	Coperchio olio Oil chamber cover
2	Dado Stretching washer	21	Guarnizione Rubber washer	40	Vite Screw
3	Dado Washer	22	Vite Screw	41	Dado Washer
4	Bullone Bolt	23	Dado Stretching washer	42	O-ring O-ring
5	Dado Washer	24	Dado Washer	43	Vite Screw
6	Maniglia Handle	25	Protezione Line protector	44	Paraolio Oil seal
7	Dado Nut	26	Coperchio motore Motor cover	45	Corpo pompa Pump body
8	Protezione Protector	27	Protezione termica Thermal protector	46	Girante Impeller
9	Cavo Cable presser	28	O-ring O-ring	47	Anello Shredding ring
10	Dado Washer	29	Statore Motor Stator	48	Dado Washer
11	Vite Screw	30	Dado Undulated washer	49	Bullone Bolt
12	Bullone Bolt	31	Cuscinetto Ball bearing	50	Canna radiale Radial cutter
13	O-ring O-ring	32	Albero motore Rotor	51	Dado Washer
14	Vite Screw	33	Cuscinetto Ball bearing	52	Vite Screw
15	Flangia Flange	34	Vite Screw	53	Chiavetta Key
16	Cavo Cable	35	Dado Washer	54	Galleggiante Float switch
17	Protezione cavo Cable protector	36	Connessione Connection part	55	O-ring O-ring
18	Coperchio condensatore Capacitor cover	37	Tenuta meccanica Mechanical seal	56	Dado Connection nut
19	Condensatore Capacitor	38	O-ring O-ring	57	Connettore uscita Out-let connector

